

## Technical Data

**Id-No. 32.15180.023020**

Bird defense ring for precipitation sensors with

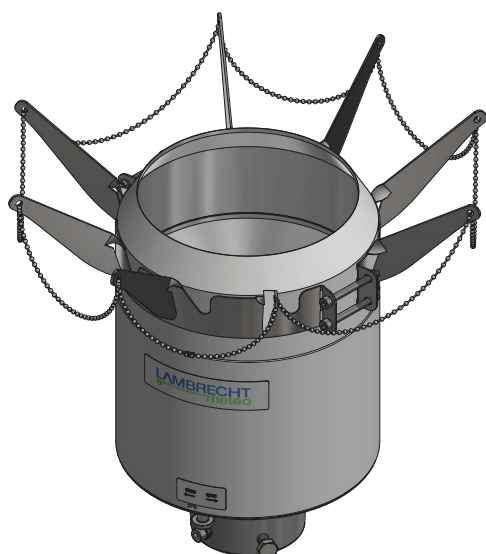
Outer diameter: 188...190 mm

Material: Stainless steel (V2A)

Weight: 0.35 kg

For Lambrecht meteo sensor (please order separately):

- |              |                     |
|--------------|---------------------|
| ▶ rain[e]    | ▶ rain[e] Modbus    |
| ▶ rain[e]one | ▶ rain[e]one Modbus |
| ▶ rain[e]LP  | ▶ 15189             |



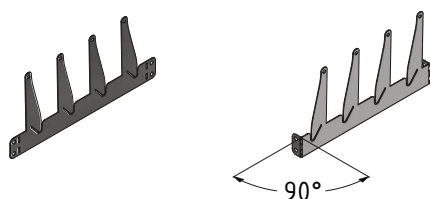
## Warranty

**Please note the loss that unauthorised manipulation of the system shall result in the loss of warranty and non-liability. Changes to system components require express written permission from LAMBRECHT meteo GmbH. These activities must be performed by a qualified technician.**

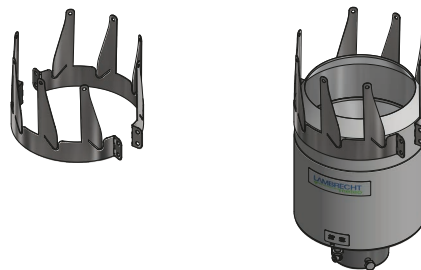
### The warranty does not cover:

1. Mechanical damage caused by external impacts (e. g. icefall, rockfall, vandalism).
2. Impacts or damage caused by over-voltage or electromagnetic fields which are beyond the standards and specifications of the device.
3. Damage caused by improper handling, e. g. by using the wrong tools, incorrect installation, incorrect electrical installation (incorrect polarity) etc.
4. Damage caused by using the device outside the specified operation conditions.

Bend the ring

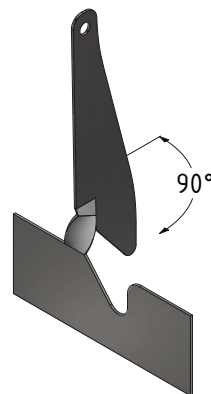
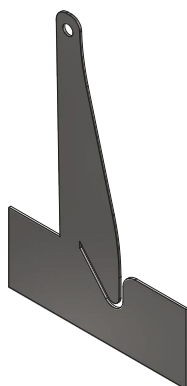
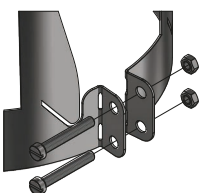


Mount the ring on top of the rain[e]

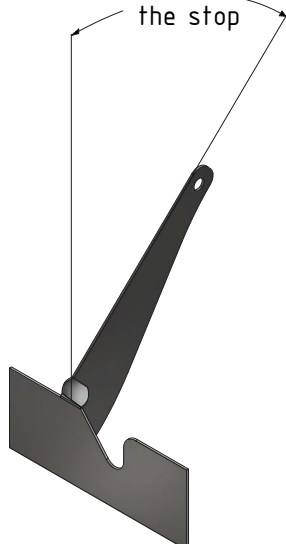


Bend the chain stays while the ring is mounted on the rain[e]

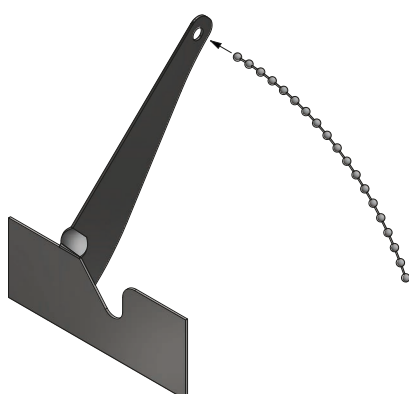
Mount screws



Bend up to the stop



Insert the chain



Insert chain into chain lock

