

USER MANUAL

# 8141.6

Ventilated Sensor Shelter



## Function and description

Sensor shelters are used to protect temperature and humidity measuring instruments against unwanted influences of the weather when effecting measurements in the open air. Thus the determined results of measurement are independent of precipitation and their evaporation as well as of direct and indirect radiation. The measuring results would be safe and comparable.

Constructionally all sensor shelters are in such a way arranged that the data acquisition area of the installed sensor are located in the middle of the shelter. Additionally the upper lamellae is closed for thermal insulation purpose. Thus optimal measuring conditions are ensured. The plastic lamellae are arranged in a defined distance, one above the other. By the special lamella design the protection of the sensor against unwanted influences is extremely effective.

The sensors are placed from down into the opening of the shelter and fixed by a clamping screw. The maximum outside diameter of the sensors is  $\varnothing$  25 mm. The shelters are prepared for the mounting at traverses or pipes.

## Benefits

- Artificial ventilation
- Improved lamellar system
- Suitable protection against direct and indirect radiation
- Protection against weather influences
- Simple mounting on pipes

## Warranty

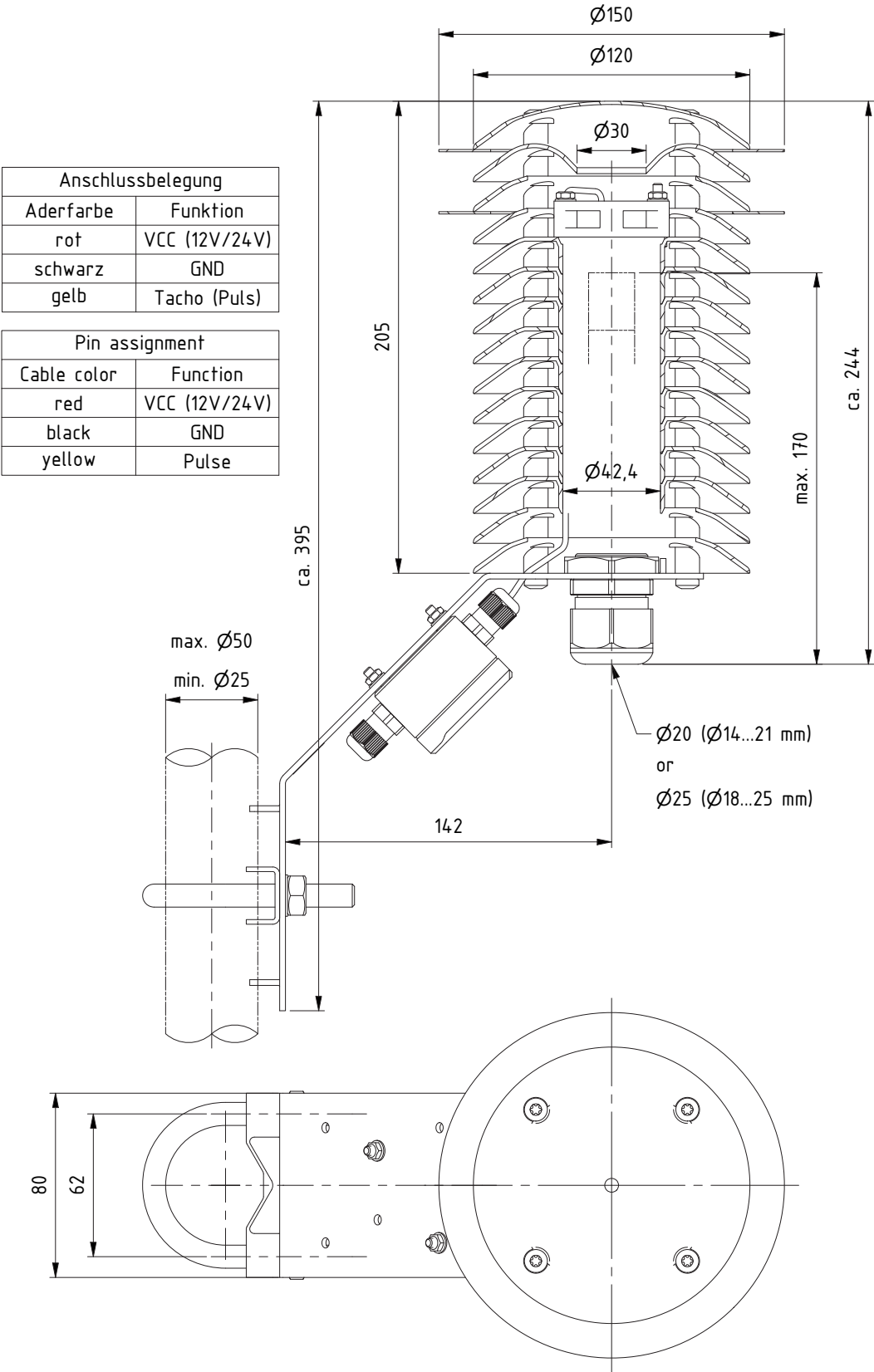
**Please note the loss of warranty and non-liability by unauthorized manipulation of the system. You need a written permission of the LAMBRECHT meteo GmbH for changes of system components. These activities must be operated by a qualified technician.**

The warranty does not cover:

1. Mechanical damages caused by external impacts (e. g. icefall, rockfall, vandalism).
2. Impacts or damages caused by over-voltages or electromagnetic fields which are beyond the standards and specifications in the technical data.
3. Damages caused by improper handling, e. g. by wrong tools, incorrect installation, incorrect electrical installation (false polarity) etc.
4. Damages which are caused by using the device beyond the specified operation conditions.



# Dimensioned drawing and pin assignment ventilator



## Technical data

### ID 00.08141.600004 Ventilated Sensor Shelter (8141.6)

Range of application:	-40...+70 °C
Amount of lamellas:	15
Dimensions:	Diameter = 150 mm; height = 395 mm (incl. mounting)
for mast diameter:	25...50 mm
Weight:	1,400 g
Ventilator:	Range of application: -40...+70 °C Supply voltage: 9.5...13.2 VDC Power consumption: 1.4 Watt (max. 1.8 W) Durability: 50,000 h Protection class: IP 68
<u>Accessories:</u> (included in scope of delivery)	Screwing for sensor diameter 14...21 mm
<u>Accessory:</u> (optional)	<b>ID 32.08141.001010</b> Adapter for sensor diameter 5 mm <b>ID 67.26010.540100</b> Screwing for sensor diameter 18...25 mm

## Disposal

LAMBRECHT meteo GmbH is listed and registered at the Stiftung Elektro-Altgeräte Register ear under:

**WEEE-Reg.-Nr. DE 45445814**

In the category of monitoring and control instruments, device type: "Monitoring and control instruments for exclusively commercial use".

### Within the EU



The device has to be disposed according to the European Directives 2002/96/EC and 2003/108/EC (Waste Electrical and Electronic Equipment). Do not dispose the old device in the household waste! For an environmentally friendly recycling and disposal of your old device, contact a certified disposal company for electronic waste.

### Outside the EU

Please follow the regulations in your country regarding the appropriate disposal of waste electronic equipment.

Copyright © 2023 LAMBRECHT meteo GmbH. All rights reserved.  
 Information in this document subject to change without notice.  
 Photo copyright: © Leonid - Adobe stock

8141.6\_ventiliert\_b-de.indd 47.23

**LAMBRECHT meteo GmbH**  
**Friedländer Weg 65-67**  
**37085 Göttingen**  
**Germany**

Tel +49-(0)551-4958-0  
 Fax +49-(0)551-4958-312  
 E-Mail [info@lambrecht.net](mailto:info@lambrecht.net)  
 Internet [www.lambrecht.net](http://www.lambrecht.net)

