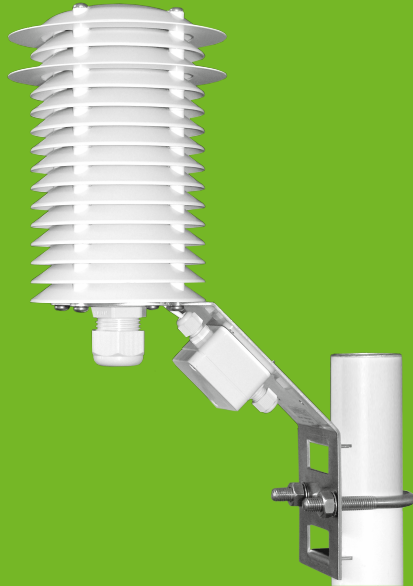


## Sensor shelter WITH ARTIFICIAL VENTILATION



For all weathers...!

This artificially ventilated sensor shelter is designed for universal use with relative humidity and air temperature measuring instruments. The ventilation system draws ambient air and conveys it through the sensor. Possible measuring errors caused by direct or reflected radiation, especially during calm, will be avoided.

- light and radiation transmission nearly eliminated
- easy installation
- very robust
- to be used individually for different types of sensors
- improved lamellar system
- artificial ventilation
- including mounting material for different poles
- made from UV and weather-proof material
- no return of heated air into the ventilation circle

### APPLICATIONS

- classical and agricultural meteorology
- industry and hydrology
- artificial snow plants
- traffic meteorology
- building services

Professional Line	Sensor shelter with artificial ventilation
Id-No.	00.08141.600004
Range of application	-40...+70 °C
Supply voltage	9.5...13.2 VDC
Power consumption	1.4 W (max. 1.8 W)
Dimensions	Ø 150 mm, Height: 395 mm (incl. mounting)
Amount of lamellas	15
Protection class	IP 68
Weight	1.4 kg
Included in delivery	Screwing for sensor diameter 14...21 mm
Options (order separately)	32.08141.001010: Adapter for sensor diameter 5 mm 67.26010.540100: Screwing for sensor diameter 18...25 mm

As of: 07.06.2020